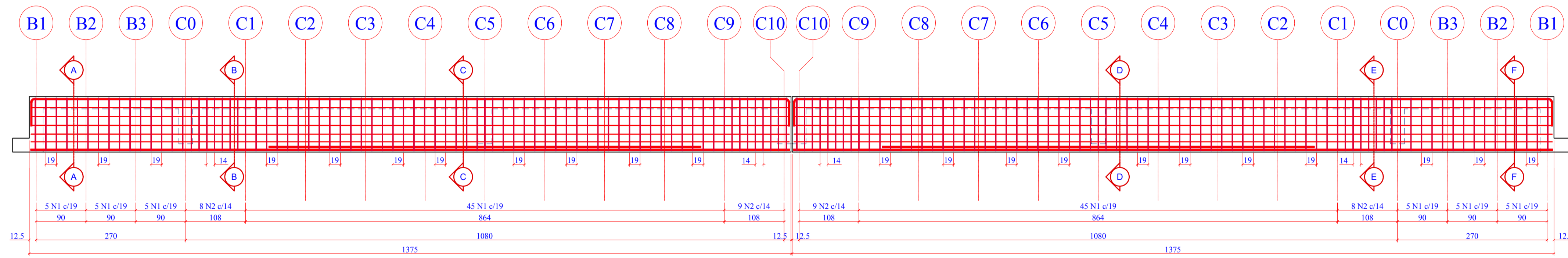
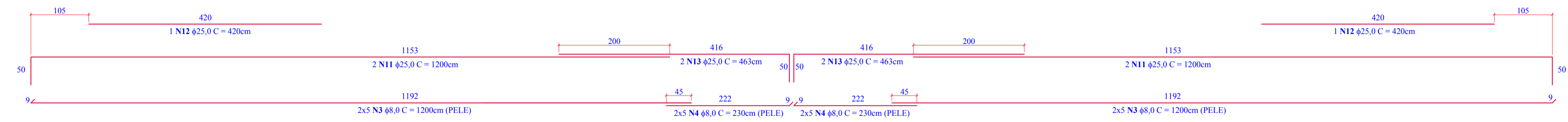
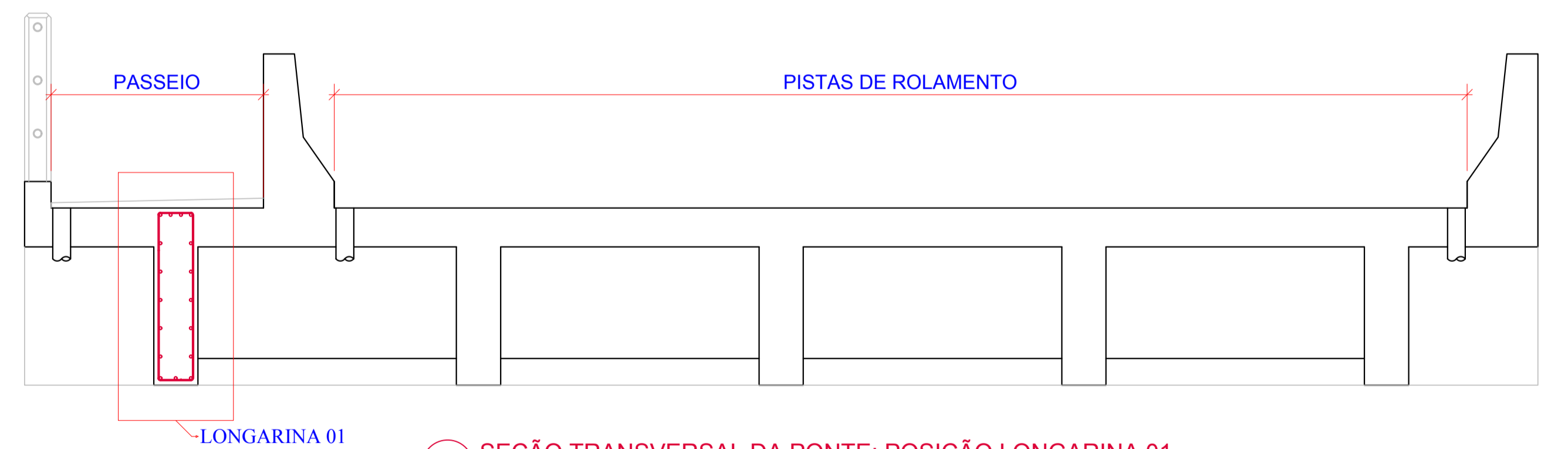


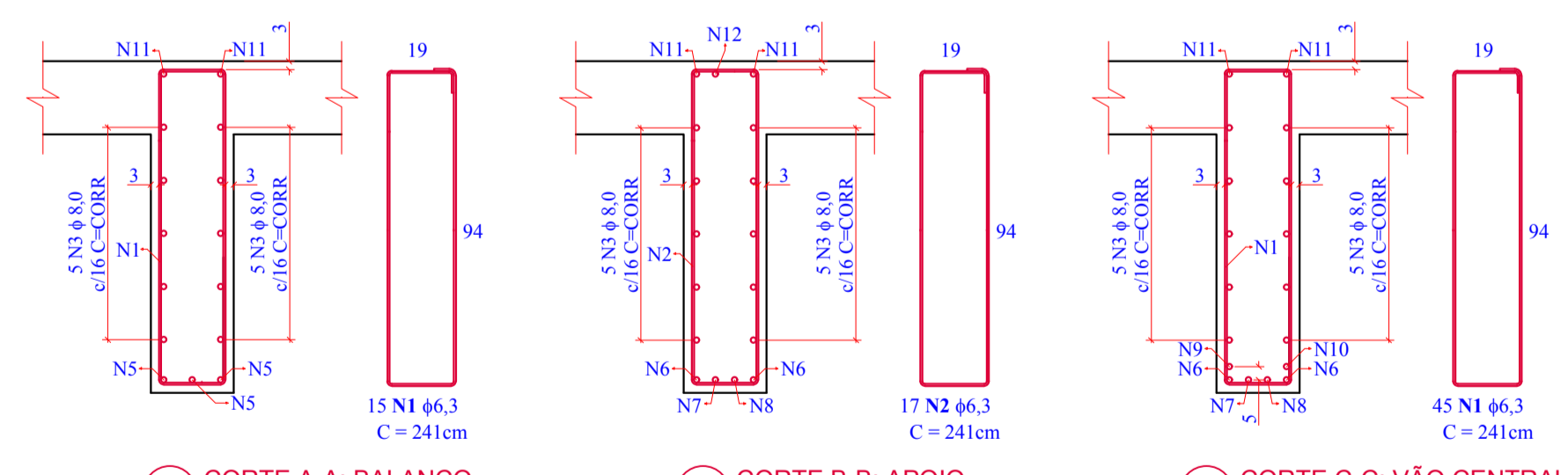
1 PLANTA DE FORMAS: LONGARINA 01 (1x)
ESCALA 1:50



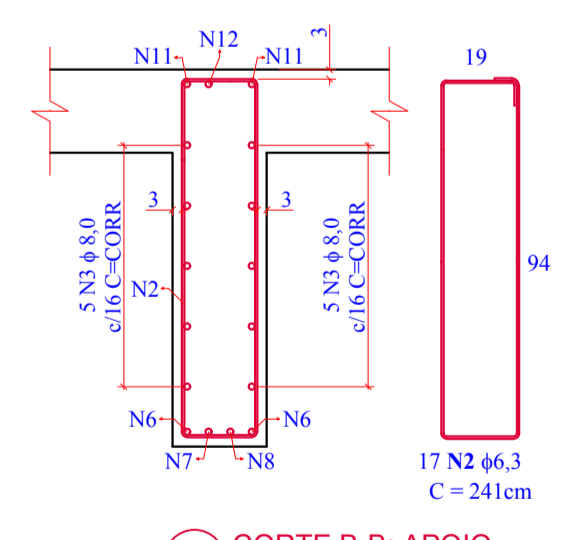
2 PLANTA DE ARMADURAS: LONGARINA 01 (1x)
ESCALA 1:50



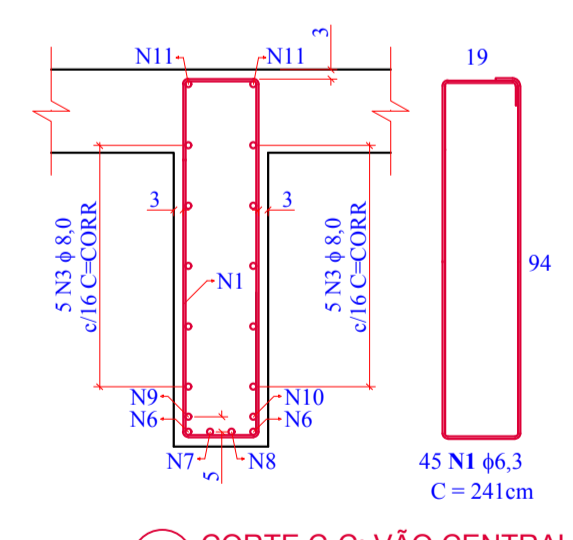
9 SEÇÃO TRANSVERSAL DA PONTE: POSIÇÃO LONGARINA 01
ESCALA 1:25



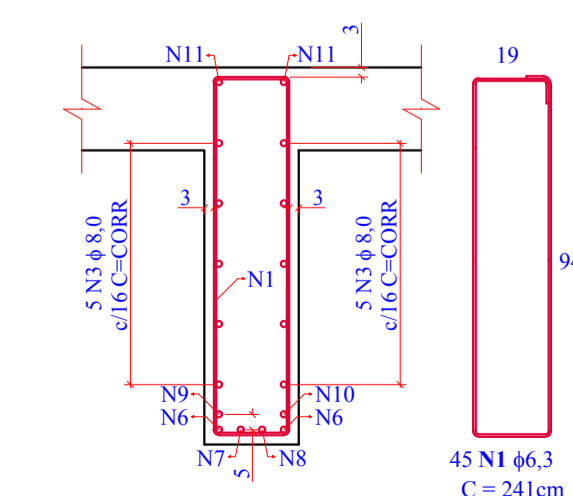
3 CORTE A-A: BALANÇO
ESCALA 1:50



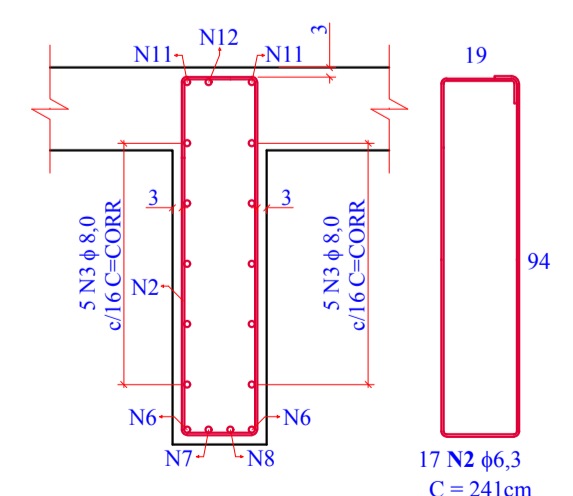
4 CORTE B-B: APOIO
ESCALA 1:50



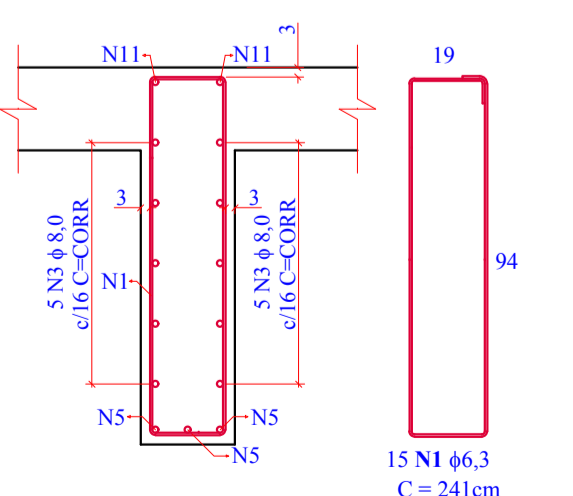
5 CORTE C-C: VÃO CENTRAL
ESCALA 1:50



6 CORTE D-D: VÃO CENTRAL
ESCALA 1:50



7 CORTE E-E: APOIO
ESCALA 1:50



8 CORTE F-F: BALANÇO
ESCALA 1:50

Relação do aço (1x)

AÇO	N	DIAM	Q	UNIT (cm)	C.TOTAL (cm)
CA50	1	6,3	120	241	28920
	2	6,3	34	241	8194
	3	8,0	20	1200	24000
	4	8,0	20	230	4600
	5	12,5	6	270	1620
	6	25,0	4	1200	4800
	7	25,0	2	1120	2240
	8	25,0	2	970	1940
	9	25,0	2	780	1560
	10	25,0	2	485	970
	11	25,0	4	1200	4800
	12	25,0	2	420	840
	13	25,0	4	463	1852

Resumo do aço (1x)

AÇO	DIAM	C.TOTAL (m)	PESO + 0% (kg)
CA50	6,3	371,14	90,93
	8,0	286,00	112,97
	12,5	16,20	15,60
	25,0	190,02	732,15
PESO TOTAL (kg)			
CA50			951,65

Volume de concreto (C-35) = 5,36 m³
Área de forma Plana = 46,98 m²

AMUREL
ASSOCIAÇÃO DE MUNICÍPIOS DA REGIÃO DE LAGUNA
GENÉRSI TRISTE

TÍTULO
PROJETO EXECUTIVO DE ENGENHARIA

OBJETO
PONTE DE CONCRETO

CONTRATANTE
MUNICÍPIO DE SÃO MARTINHO
CNPJ: 82.928.656/0001-33

CONTEÚDO
PLANTA DE ARMADURAS: LONGARINA 01 (1X)

REFERÊNCIA

LOCAL
ESTRADA GERAL VARGEM DO CEDRO - SÃO MARTINHO/SC

RESP. PROJETO
ANDRÉ LABANOWSKI JÚNIOR
ENGENHEIRO CIVIL CREA/SC - 064.638-2

TOPOGRAFIA
PREFEITURA MUNICIPAL DE SÃO MARTINHO

DESENHO

DATA

FOLHA
13
21

EXTENSÃO TOTAL: 27,82 m
LARGURA: 5,55 m
ÁREA: 235,30 m²