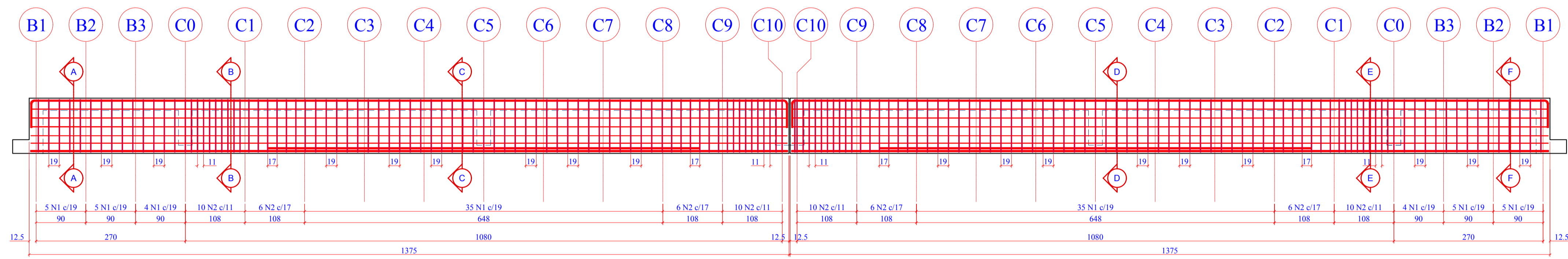
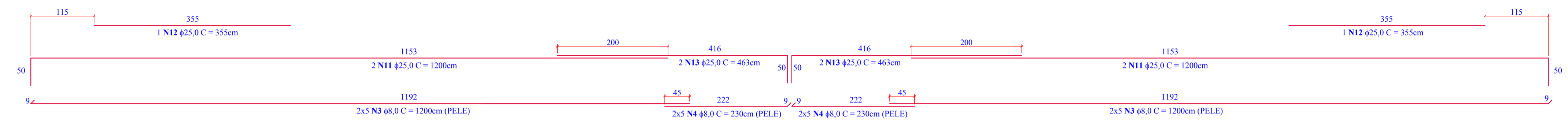
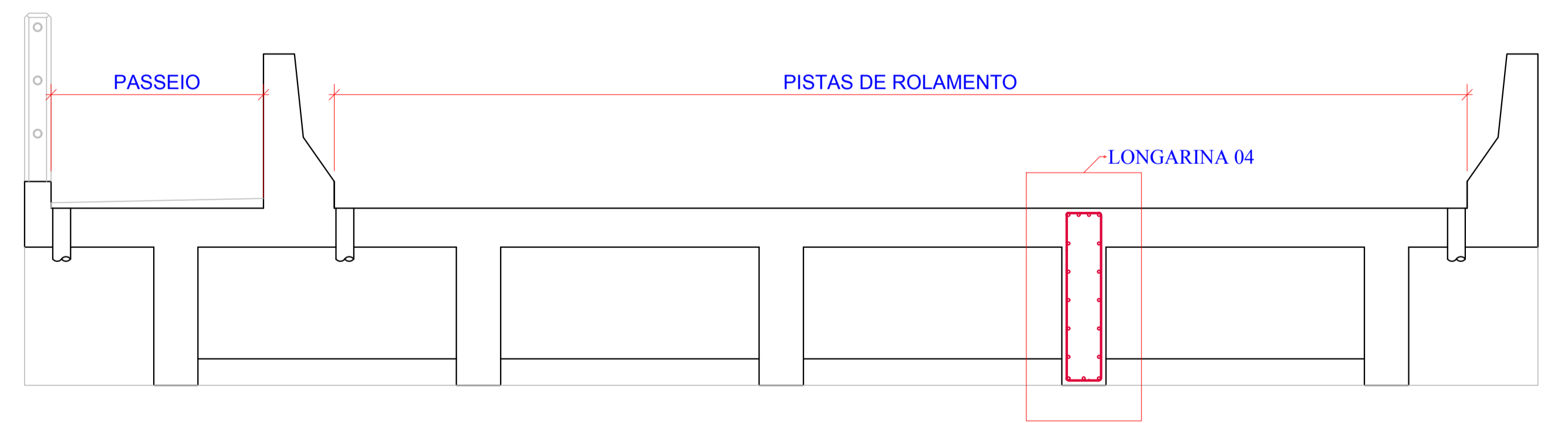


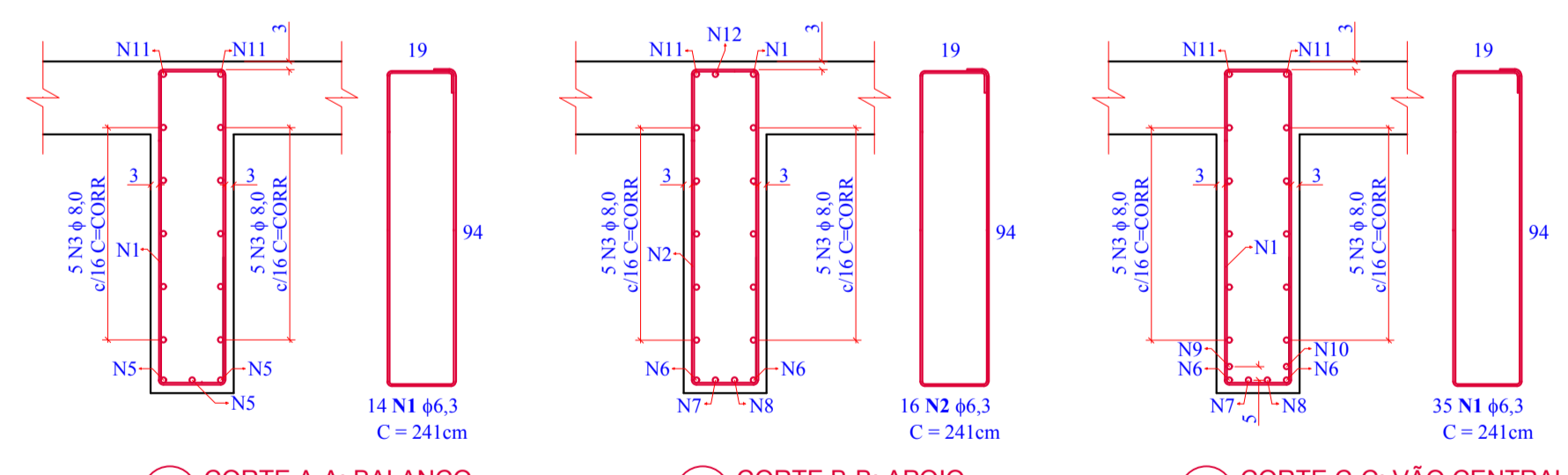
1 PLANTA DE FORMAS: LONGARINA 04 (1x)  
ESCALA 1:50



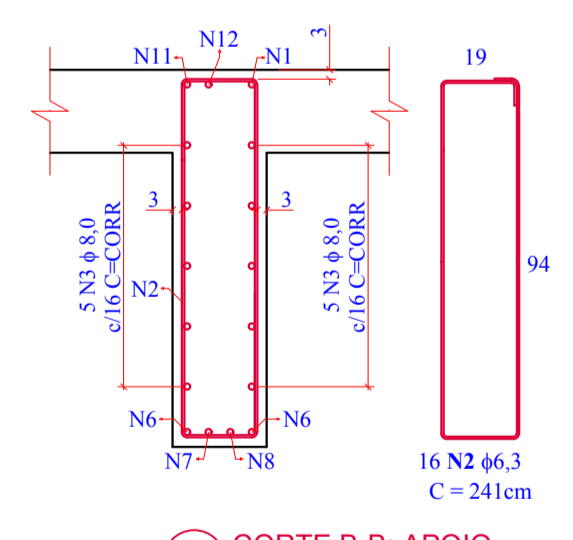
2 PLANTA DE ARMADURAS: LONGARINA 04 (1x)  
ESCALA 1:50



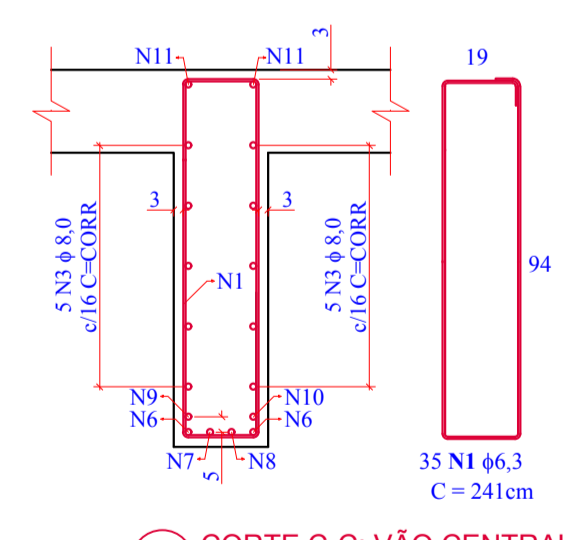
9 SEÇÃO TRANSVERSAL DA PONTE: POSIÇÃO LONGARINA 04  
ESCALA 1:25



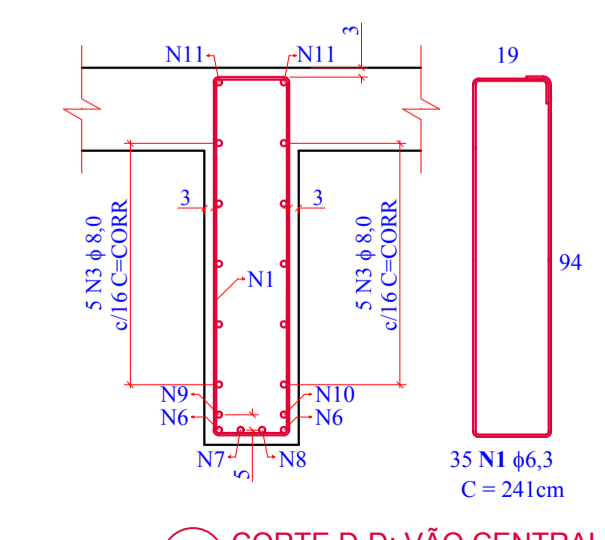
3 CORTES A-A: BALANÇO  
ESCALA 1:50



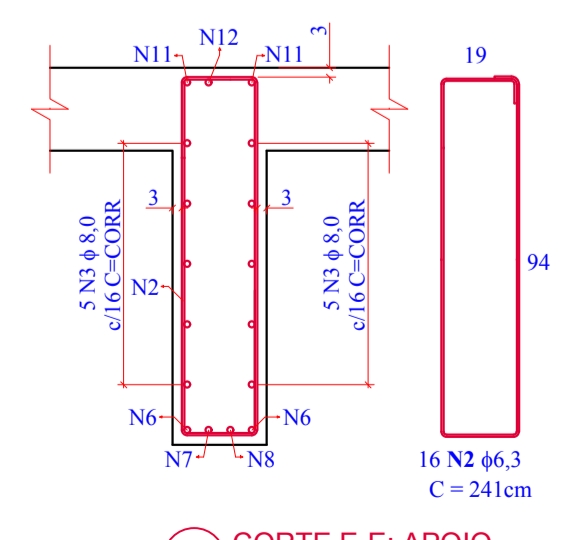
4 CORTES B-B: APOIO  
ESCALA 1:50



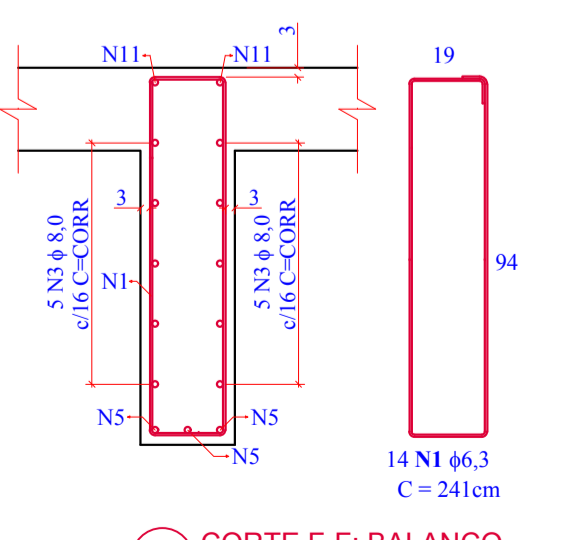
5 CORTES C-C: VÃO CENTRAL  
ESCALA 1:50



6 CORTES D-D: VÃO CENTRAL  
ESCALA 1:50



7 CORTES E-E: APOIO  
ESCALA 1:50



8 CORTES F-F: BALANÇO  
ESCALA 1:50

Relação do aço (1x)

AÇO	N	DIAM	Q	UNIT (cm)	C.TOTAL (cm)
CA50	1	6,3	98	241	23618
	2	6,3	64	241	15424
	3	8,0	20	1200	24000
	4	8,0	20	230	4600
	5	12,5	6	270	1620
	6	25,0	4	1200	4800
	7	25,0	2	1120	2240
	8	25,0	2	990	1980
	9	25,0	2	845	1690
	10	25,0	2	650	1300
	11	25,0	4	1200	4800
	12	25,0	2	355	710
	13	25,0	4	463	1852

Resumo do aço (1x)

AÇO	DIAM	C.TOTAL (m)	PESO + 0% (kg)
CA50	6,3	390,42	95,65
	8,0	286,00	112,97
	12,5	16,20	15,60
	25,0	193,72	746,40
<b>PESO TOTAL (kg)</b>			
CA50			970,63

Volume de concreto (C-35) = 5,36 m³  
Área de forma Plana = 46,98 m²



TÍTULO  
**PROJETO EXECUTIVO DE ENGENHARIA**

OBJETO  
**PONTE DE CONCRETO**

CONTRATANTE  
**MUNICÍPIO DE SÃO MARTINHO**  
CNPJ: 82.928.656/0001-33

CONTEÚDO  
**PLANTA DE ARMADURAS: LONGARINA 04 (1X)**

REFERÊNCIA

LOCAL  
**ESTRADA GERAL VARGEM DO CEDRO - SÃO MARTINHO/SC**

RESP. PROJETO  
**ANDRÉ LABANOWSKI JÚNIOR**  
ENGENHEIRO CIVIL CREA/SC - 064.638-2

DESENHO  
**PREFEITURA MUNICIPAL DE SÃO MARTINHO**

DATA  
**MARÇO/2019**

FOLHA  
**16**

EXTENSÃO TOTAL: 27,82 m  
LARGURA: 8,55 m  
ÁREA: 235,30 m²

ESCALA  
INDICADA